

ROGER KITE
PATHWAYS

ROGER KITE

PATHWAYS

An Acme Studios publication

Published on the occasion of Roger Kite's survey exhibition of paintings, *Pathways*, at the Acme Project Space, London, 17 November to 16 December 2012

With grateful thanks to Shelagh Cluett (1947-2007)

For Valerie

Introduction

This survey exhibition, *Pathways*, traces Roger Kite's work from 1976 to the present and forms part of Acme Studios' 40th anniversary calendar of events. With the exception of the co-founders, Roger is Acme's longest-serving staff member, having joined the organisation as our housing manager in 1978 and for many years holding the post of Senior Repairs & Maintenance Manager, working on a part-time basis. At the end of next year Roger will be leaving us to pursue his practice full time. This show not only celebrates Roger's work but also the strong and enduring relationships that Acme has enjoyed with its staff and ex-staff over many years.

Acme was formed by artists as a self-help organisation in 1972, and although not now 'artist-led' continues to be 'artist-centred', focusing on providing support for artists at the most fundamental level of research and production. Our philosophy and work is informed and enriched by the fact that many staff members are artists. We not only benefit from their professional skills and untiring commitment, but from their direct understanding of the practical realities of being an artist. Long may this continue; it is an essential ingredient that will keep us true to our founding principles.

The roots of many organisations formed by artists can often be traced to their earliest formative years together at art college and Acme is no exception. While those who studied at Reading University Fine Art Department can claim to be the most active in forming Acme, there is also a strong link to Chelsea School of Art where Roger was a postgraduate student. While we may justifiably claim to have been the artist pioneers into the geographical heart of East London, Roger early on had a studio in the complex of warehouses at Butler's Wharf overlooking Tower Bridge after leaving Chelsea in 1975. This was shared with ex-Chelsea graduates Mikey Cuddihy, Gillian Ingham, Simon Read and Keir Smith. The remarkable story of the occupation by artists of these riverside warehouses has yet to be fully told. Fire regulations and health and safety were considered as curious optional extras and this extraordinary but precarious studio experience would have instilled in Roger a keen sense of the need to balance the practical with the romantic, to Acme's and artists' lasting benefit.

Roger applied to The Acme Gallery in Covent Garden for an exhibition and his first one-person show of paintings and drawings opened in September 1977. 'Pure colour' even then was central to his practice, with the resulting 'abstract' works evolving from a process-based approach involving a random selection and application of groups of colours applied to geometric formats. *Diagonal 1*, 1976, from that series, is included in this exhibition.

Experimentation with abstraction continued into the 80s, but increasingly 'figurative' elements such as body measurements, including those of his family, began to define the assemblages of monochrome panels. Colour was sometimes chosen for its emotional impact with references directly to skin, hair and blood. These elements continued to be embedded deep into the process of conceptualising and realising the work and, into the 90s, extended to the inside of the body and to plants where in nature their structures take common forms.

In 1994 Roger received the Abbey Award at the British School at Rome which coincided with sabbatical leave from Acme. We have always believed that sabbaticals are wonderful investments that pay dividends for both recipient and organisation, and this period of leave for Roger had a profound effect on his future work. A number of strong visual influences coincided – the intense reds and yellow ochres of the walls of many buildings, the stone pines, cypresses and olive trees and, most particularly, the ancient Roman fresco paintings. In some phases of Roman painting a wall may be a single intense colour containing a centralised, relatively small isolated motif such as a floating figure. These influences are all visible and celebrated in recent work.

This exhibition cannot of course do full justice to Roger's work, but provides a glimpse of a journey of discovery. The last time Roger and I worked together on an exhibition was his 1977 show at The Acme Gallery; it is a great pleasure to be working with him again. We wish him every possible success with our very best wishes.

Jonathan Harvey
Co-founder and Chief Executive

Transmission, 2009
Acrylic, 115 x 85 cm



Rescue, 2006
Oil, 112 x 82.5 cm



Recall, 2008
Oil, 115 x 85 cm



Red Spark, 2010
Acrylic, 115 x 85 cm



Rolling, 2011
Acrylic, 60 x 70 cm



Riven, 2009
Acrylic, 115 x 85 cm



Montebuono, 2011
Acrylic, 60 x 70 cm



Fracture, 2010
Acrylic and oil, 100 x 70 cm



Gran Sasso, 2010
Acrylic, 102 x 76 cm



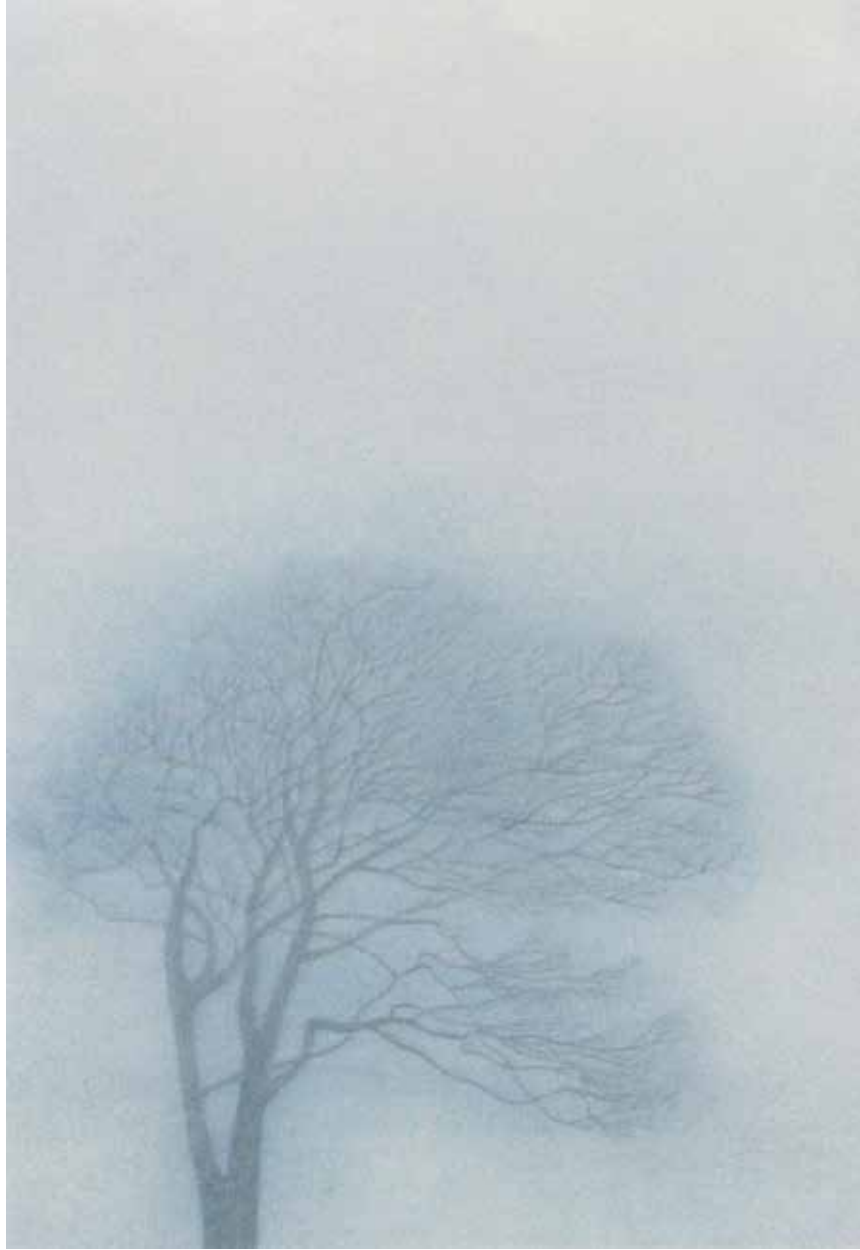
In Blue, 2006
Oil, 112 x 82 cm



Continuing, 1999
Oil, 104 x 79 cm



Silver, 2007
Watercolour, 95 x 66 cm



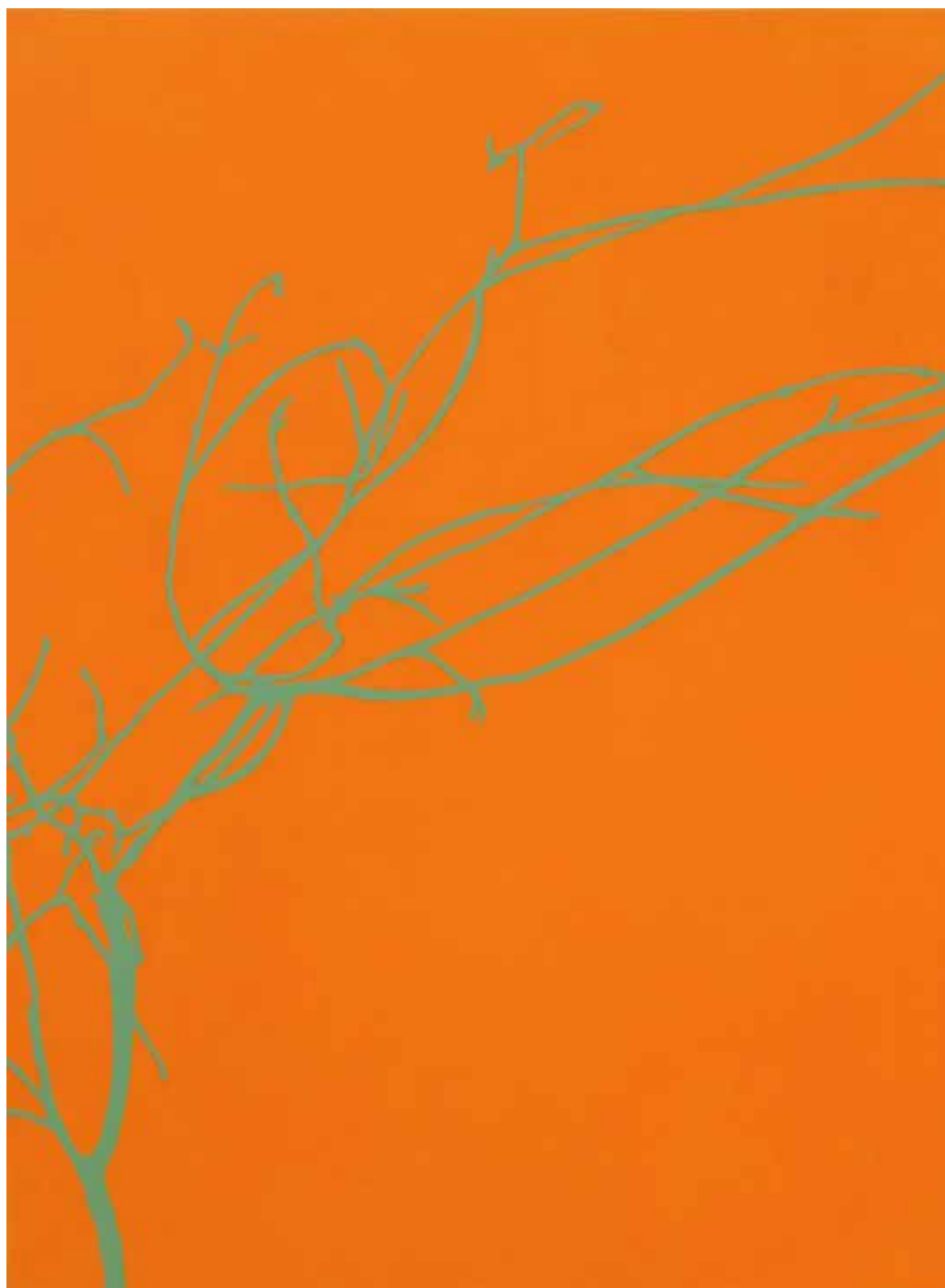
Slack, 2009
Acrylic, 115 x 85 cm



Riverrun, 2012
Acrylic, 115 x 85 cm



Swerving, 2012
Acrylic, 115 x 85 cm



Nebula, 2006
Oil, 112 x 81 cm



Tilt, 2009
Acrylic, 115 x 85 cm

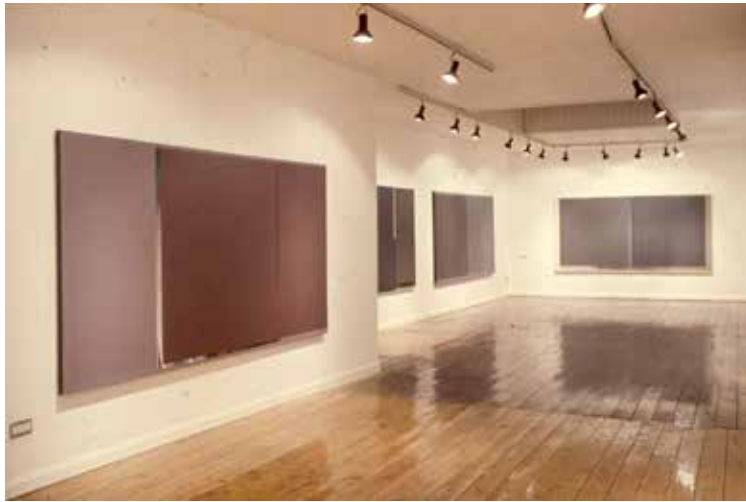


Earth, 2000
Oil, 107 x 76 cm



Pebble, 2011
Acrylic, 100 x 70 cm





The Acme Gallery 1977



Roundhouse Gallery 1980 (Gerard Wilson sculpture in foreground)



Wapping Open Studios 1982



Showroom Gallery, Bonner Road 1984



Cafe Gallery 1989



Smith Jariwala Gallery 1992



'Bruise' Ikon Birmingham 1992



Mostra, studio show British School at Rome 1994

Roger Kite

Born 1947

www.rogerkite.com

Studies

1970-74 Hornsey College of Art
1974-75 Chelsea School of Art MA

Awards

1977 GLAA Award
1978 Arts Council Award
1981 GLAA Award
1987 Drawing Prize, Artists in Essex
1994 Abbey Award to British School
at Rome
1996 Abbey Award to Eremo di
S. Caterina, Elba

Solo Exhibitions

1977 The Acme Gallery, London
1978 Richard Demarco Gallery,
Edinburgh
1978 Gardner Arts Centre, Brighton
1980 Roundhouse Gallery, London
1980 Ceolfrith Gallery, Sunderland
1983 Galleria Katariina, Helsinki,
Finland
1984 Showroom Gallery, London
1989 Cafe Gallery, London
1990 Smith Jariwala Gallery, London
1992 Smith Jariwala Gallery, London
1994 British School at Rome, Italy
1996 S. Caterina, Rio nell'Elba, Italy
1996 Centro Telemaco Signorini,
Portoferraio, Italy
1997 Casa Valdese, Rio Marina, Italy
1999 Longford Gallery, Rome
2002 The Gallery, ICH, London

Selected group and mixed exhibitions

1977 London Group
Whitechapel Open
1978 Arts Council Acquisitions,
Hayward Gallery
'Out of the Blue', The Acme
Gallery, London
Whitechapel Open
'Two Contemporary Painters',
Swiss Cottage
1979 Cleveland International
Drawing Biennale
London Group
1981 Leicestershire Schools
Collection
Albany Neon Sign
Competition, runner-up
1982 Royal Academy Summer
Exhibition
London Group
Whitechapel Open
Galerie Hoffman, Fiedberg,
Germany
Musée de Tourcoing, France
Small Works, Newcastle
Polytechnic
Artists in Essex, Epping Forest
Museum
1983 Nine Artists from Wapping,
Ferens, Hull and tour
Ten British Artists touring show,
Finland
1984 Whitechapel Open
'The River', Cafe Gallery
Camden Annual

1986 Whitechapel Open
 1987 Artists in Essex
 Athena International, Barbican
 'Kites', Cafe Galley
 Small Works, Patricia Knight
 Gallery
 London Group touring show
 1988 'Death', Kettle's Yard
 Artists in Essex
 London Group
 1989 Leicestershire Schools
 Collection, Whitechapel Gallery
 London Group
 John Moores 16, Walker Art
 Gallery, Liverpool
 1990 'Self Portraits', Cafe Gallery
 London Group
 1991 London Art Fair
 1992 'Bruise', Ikon, Birmingham
 and Cornerhouse, Manchester
 'The Boat Show', Cafe Gallery
 1993 'Bruise', Cleveland Gallery
 1995 'Image-ings', Kapil
 Jariwala Gallery
 'Outpost', Venice Biennale
 CAS Market, RFH
 1996 CAS Market, RFH
 1997 'Ten Years After', Kapil
 Jariwala Gallery
 Singer Friedlander / Sunday
 Times Watercolour Competition
 1998 Hunting Group Prizes
 'Fuori Luogo', Campobasso,
 Italy
 Singer Friedlander / Sunday
 Times, Watercolour Competition

1999 Stephen Lacey Gallery,
 London
 Cheltenham International
 Drawing Show
 2000 Banners on The South Bank,
 runner-up
 Stephen Lacey Gallery
 2001 The Gallery, Southwark Park,
 Open
 2002 The Gallery, Southwark Park,
 Open
 2003 'Hortus Animae', S. Caterina,
 Elba, Italy
 Singer Friedlander / Sunday
 Times, Watercolour Competition
 2004 'Multum in Parvo', Hackney
 Forge
 2005 'Multum in Parvo', Hackney
 Forge
 2006 The Gallery, Southwark Park,
 Open
 2007 The Gallery, Southwark Park,
 Open
 2008 Nature in the 00s,
 Contemporary Art Projects
 2009 21st Century Watercolours,
 Bankside
 Affordable Art Fairs (AAF) -
 Bristol & Paris
 2010 AAF - Amsterdam, London,
 Singapore
 2011 AAF - Milan
 'Unearthed', Warton House,
 Stratford E15
 2012 Sunday Times Watercolour
 Competition

Work in collections

Arts Council England
 Epping Forest Museum
 General Electric, USA
 Hammerson plc
 Leicestershire Education Authority
 LB Camden
 LB Tower Hamlets
 McGraw Hill
 Sunderland Arts Centre
 Sussex University
 Private and corporate collections in
 Austria, Finland, Italy, UK, USA

Published on the occasion of Roger Kite's survey exhibition of paintings, *Pathways*, at the Acme Project Space, London, 17 November to 16 December 2012

Published by Acme Studios
44 Copperfield Road, Bow
London E3 4RR
www.acme.org.uk

Pathways – Roger Kite
Copyright © Roger Kite and Acme Studios
Text Copyright © The Authors

A catalogue record for this book is available from the British Library ISBN 978-0-9566739-4-7

All rights reserved. No part of this publication may be reproduced, stored in a retrieval system or transmitted in any form or by any means, electrical, mechanical or otherwise, without first seeking the permission of the copyright owners and the publishers.

Designed by Area
www.designbyarea.com

Printed by ArtQuarters Press
www.artquarterspress.com

acmestudios
SUPPORTING ARTISTS SINCE 1972



Supported using public funding by
**ARTS COUNCIL
ENGLAND**

