

NEW STUDIO INFORMATION

165 Childers Street, Deptford, London, SE8 5JR

Acme Studios is currently developing 30 additional self-contained studios on the ground and first floors in a former propeller factory in Deptford, in addition to 100 existing studios in the building. Construction of the studios is almost complete and they will be ready for occupation in **October 2010**.



First floor studio nearing completion at Childers Street, SE8. Photo: Acme Studios (July 2010)

Studio rent is **£10.50** per square foot and is fully inclusive of business rates. The smallest studio is around 285 square feet (26.5m²) – **less than £250 a month** - and the largest is around 680 square feet (63m²). Most of the new studios are around 375 square feet (35m²) – **less than £330 a month**. Artists will be required to pay (via a sub-metered supply) for the electricity they consume. Studios can be taken on sole or shared tenancies. There will be a rent review in 2012 and every two years after that.

Studio features

- Each studio has large windows and doors, four metre high ceilings, two double-socket electricity outlets and daylight corrected fluorescent lighting.
- Fully self-contained with solid concrete block walls and individual lockable doors.
- Key-fob entry to main building and entry-phone system.
- Ground floor studios are step-free with accessible toilets and wash-up area.
- 24-hour access to the building.
- Internal bike store on ground floor.

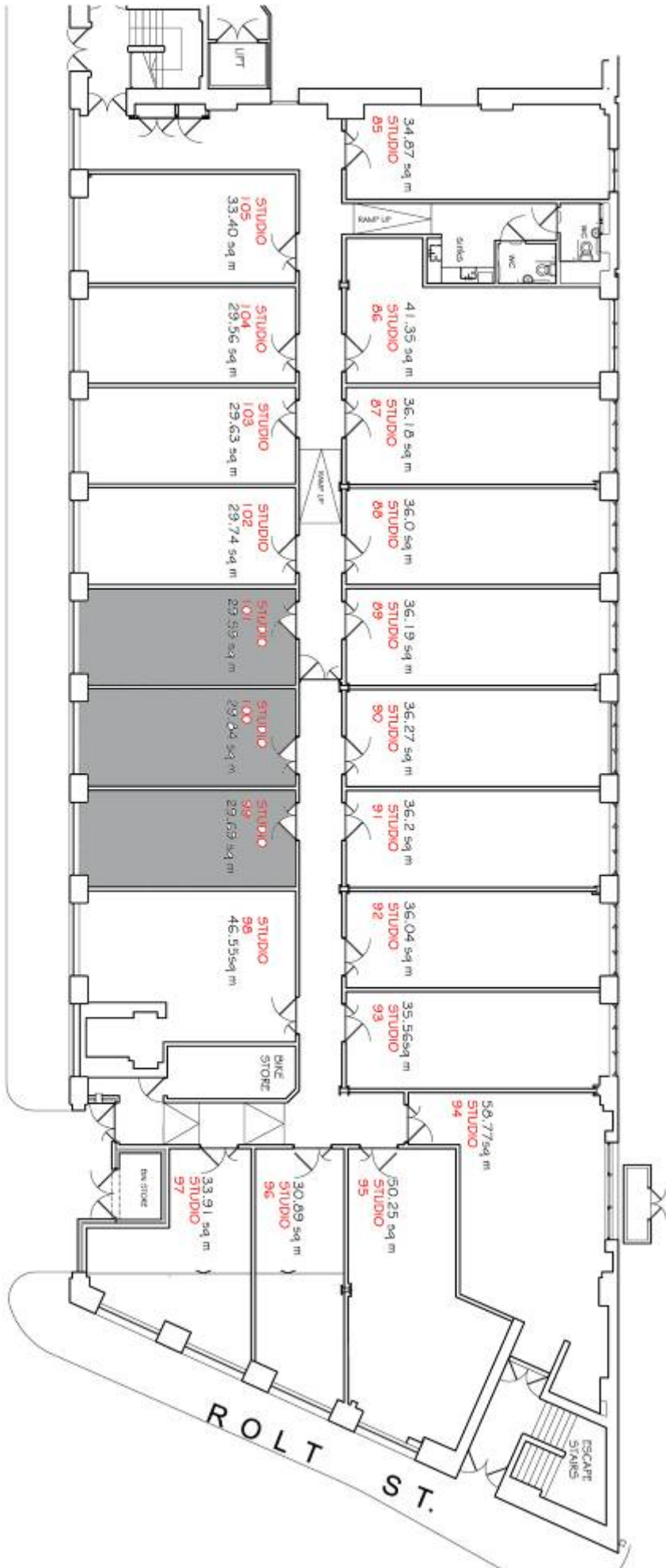


Acme's Childers Street studios are marked by the red circle in the top left corner. Map courtesy of Deptford Art Map - www.deptfordartmap.co.uk

Childers Street is situated near to Deptford High Street, just off the A200. There are good transport links with National Rail at Deptford High Street, London Overground at New Cross and DLR at Deptford Bridge. There is unrestricted parking on Childers Street.

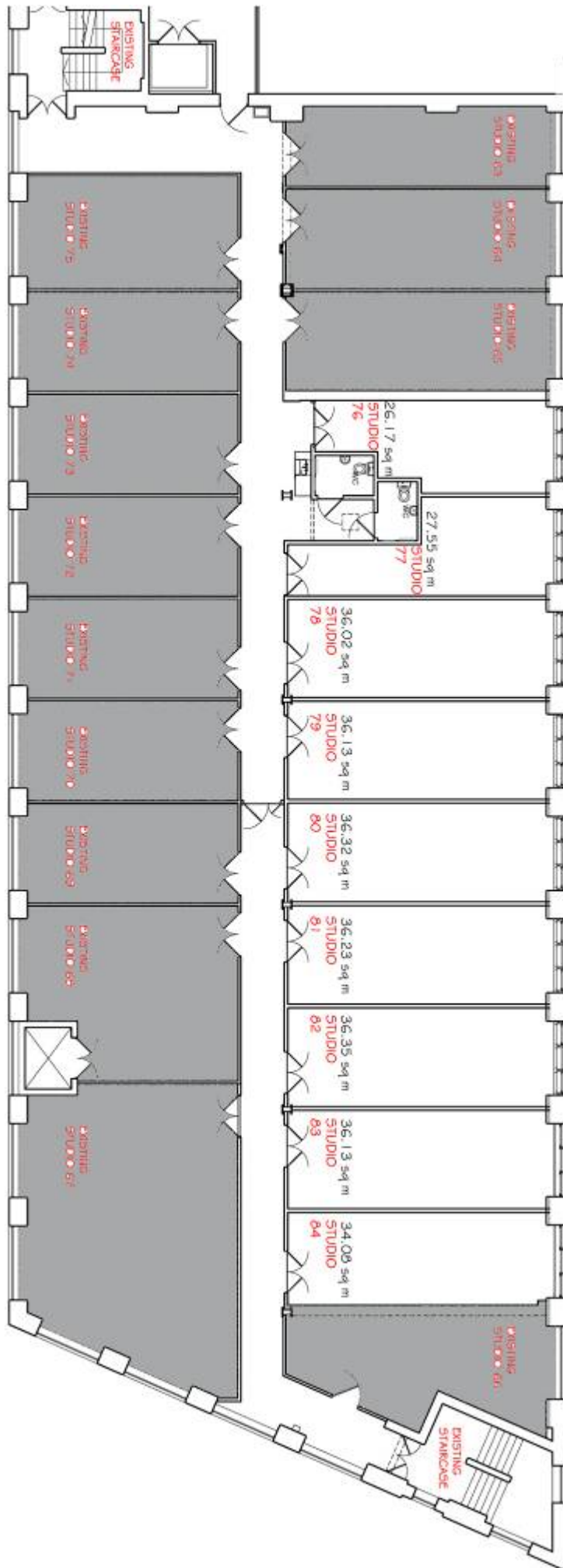
GROUND FLOOR PLAN

C H I L D E R S S T R E E T



FIRST FLOOR LEVEL

C H I L D R E R S S T R E E T



Studio size and price

Studio No.	Size m ²	Size in sq ft	£ Price per month
76	26.17	282	246.75
77	27.55	297	259.87
78	36.02	388	339.50
79	36.13	389	340.37
80	36.32	391	342.12
81	36.23	390	341.25
82	36.35	391	342.12
83	36.13	389	340.37
84	34.08	367	321.13
85	34.87	375	328.13
86	41.35	445	389.37
87	36.18	389	340.37
88	36.01	388	339.50
89	36.19	390	341.25
90	36.27	390	341.25
91	36.20	390	341.25
92	36.04	388	339.50
93	35.56	383	335.13
94	58.77	633	553.87
95	50.25	541	473.37
96	30.89	332	290.50
97	33.91	365	319.37
98	46.55	501	438.37
102	29.74	320	280.00
103	29.63	319	279.12
104	29.56	318	278.25
105	33.40	360	315.00

Studio Visits

Studio visits will be in the second and third week of September and allocation will be made from 22 September. To book a place, please email - newstudios@acme.org.uk. Alternatively, please call the Acme office - 020 8981 6811. Further information can be found on our website - www.acme.org.uk/childers.php

Please contact us on 020 8981 6811 if you require this information in an alternative format.



Supported by
**ARTS COUNCIL
ENGLAND**

