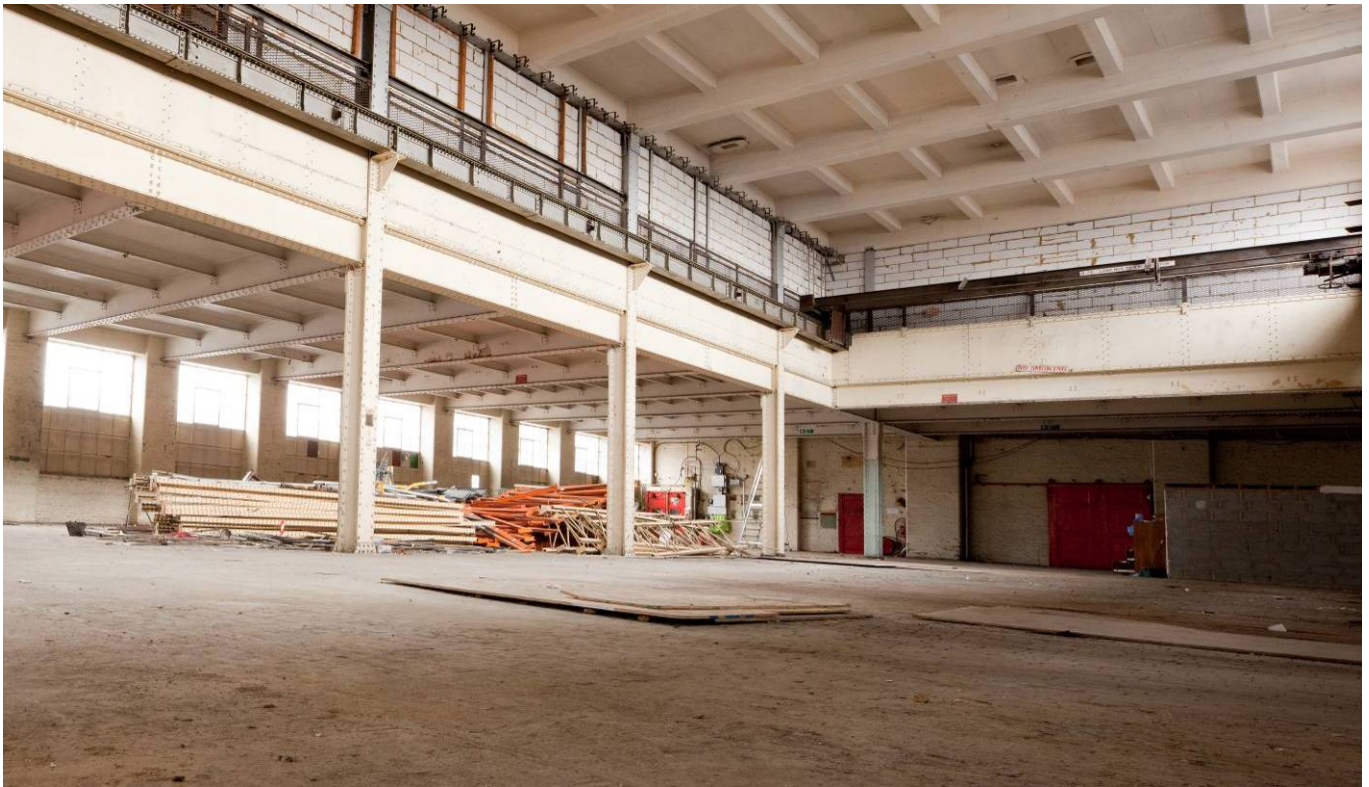


Bryen & Langley appointed to create 30 new studios in Deptford

Acme Studios has appointed construction firm Bryen & Langley to convert the ground-floor of its Childers Street building into 30 new affordable artists' studios. Acme already manages over 100 studios in the building and recently signed an extension on the existing lease including the vacant ground-floor until at least 2028.



The empty ground-floor pre-conversion at Childers Street, SE8. Photo: Greg Goodale (2010)

The large ground-floor space was most recently used by Donovan Brothers as a warehouse and was originally built as a ship propeller foundry. The contract to convert the space into self-contained studios was awarded to Bryen & Langley, an experienced building firm based in South East London who extensively renovated Toynbee Hall in Whitechapel.

David Panton, Acme Director Property Development explains the decision, "Bryen & Langley have an impressive history of converting existing buildings sympathetically. We were impressed with their approach to the project and believe the final studios will be a fantastic addition to our studio block."

The project architect is Anita Sen who has worked with Acme on various projects including the conversion of Copperfield Road into 48 self-contained studios and the Acme office in 1998.

Work is underway and the new studios are due to open in September 2010.

ENDS

Notes for editors

Founded by Jonathan Harvey and David Panton in 1972, Acme Studios is a London-based charity which provides affordable studio space, residencies and awards for non-commercial fine artists. Acme manages over 400 studios in 12 buildings across London. Acme has pioneered new models of mixed-use developments with commercial house builders and social housing providers including:

- 50 studios at the Galleria, Peckham, SE15 with Barratt Homes.
- 21 studios at Leven Road, Poplar, E14 with Swan Housing Group.
- 12 studios at Harrow Road, NW10 with Catalyst Housing Group
- 15 studios at Stratford High Street, E15 with Genesis Housing Group (opens 2012).
- 49 studios at Lesney Toys Factory, Homerton, E9 with Telford Homes (opens 2012).

For further information about Acme Studios, see www.acme.org.uk or call 020 8981 6811.

For further press information, please contact Jack Fortescue, Communications Officer at:

Acme Studios, 44 Copperfield Road, London E3 4RR
T 020 8981 6811 F 020 8983 0567 E jack@acme.org.uk



Supported by
**ARTS COUNCIL
ENGLAND**



LOTTERY FUNDED

