

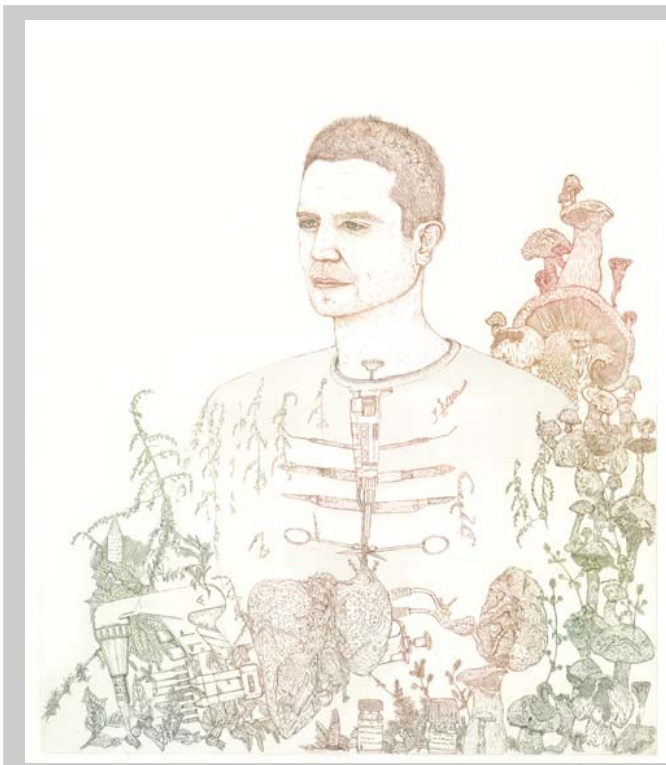
## PRESS RELEASE - FOR IMMEDIATE RELEASE

### Exhibition blurs lines between patient and psychiatrist

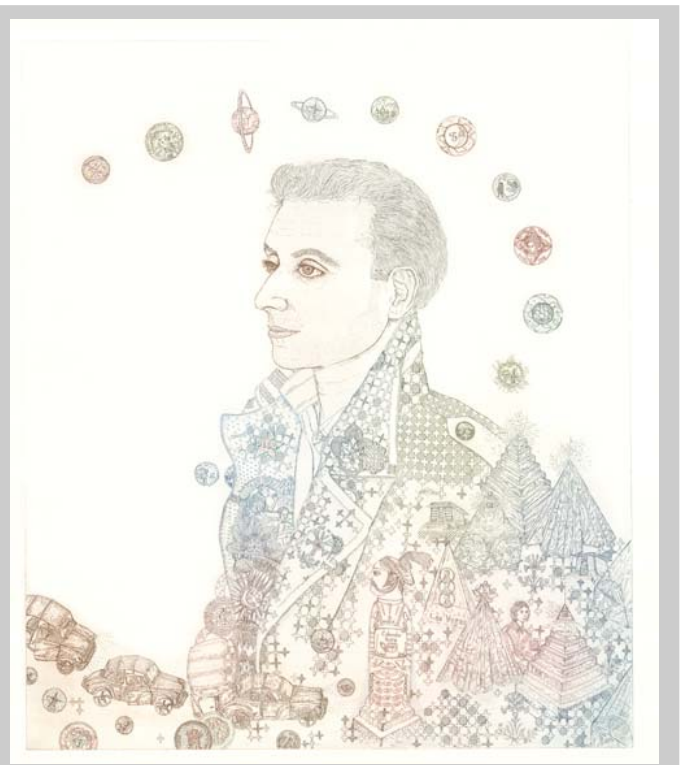
'By exploring patients' stories, asking questions about their lives, Anderson has found a way to unite visually the public and private self and, by addressing the whole individual, to return to her sitters a unique sense of their own identity.'

Emma Lilley, Associate Director, Beaux Arts

Acme Fire Station artist **Gemma Anderson** will be showing the culmination of three years' work at the Acme Project Space from 12 November. *Portraits: Patients and Psychiatrists* contains etched portraits and recorded interviews with patients and psychiatrists at Bethlem Royal Hospital, London. All the etchings are drawn directly from life onto the copperplate and contain objects and imagery which reflect the sitter who is identified only by a first name, with no indication of whether they are patient or psychiatrist.



'Connor' by Gemma Anderson



'Sultar' by Gemma Anderson

The project is a result of conversations between Gemma Anderson and forensic psychiatrist Tim McInerny and curator Sarah Williams which led to participation in 'An experiment in Collaboration' at the Jerwood Space in London in 2008. The project continued to develop with six months' funding from with the Wellcome Trust in 2009 to produce a series of life-size etchings, a blog and publication. This year has seen a series of exhibitions of the work in non-gallery venues such as the Freud Museum and Globe Theatre in London. Gemma plans to develop the project at the Acme Project Space to include audio recordings and display cases of personal objects. ENDS

## Notes for editors

### **Acme Project Space**

44 Bonner Road, Bethnal Green  
London, E2 9JS

**Exhibition** 12 November to 5 December 2010

Thursday to Sunday, 12.00 to 6.00pm

**Private View** 6pm to 8pm

Thursday 11 November

**T** 020 8981 6811

**W** [www.acme.org.uk/projectspace.php](http://www.acme.org.uk/projectspace.php)

**Tube** Bethnal Green

**Train** Cambridge Heath Road

**Car** On-street pay & display

### Biography – Gemma Anderson

Gemma Anderson was born in Belfast in 1981. A former student of the university of Ulster, Anderson went on to graduate with First Class Honours in Fine Art at Falmouth College of Art and then completed an MA at the Royal College of Art, London, graduating in 2007. Anderson has completed numerous residencies including S-AIR Japan, Centre Culturel Irlandais, Paris and Poustinia Sculpture Park, Belize. Recent exhibitions include “An Experiment in Collaboration”, Jerwood Space, London, “Drawing Ezo” Sapporo, Japan and “Isolated”, Golden Thread Gallery, Belfast. Anderson is currently working on a Wellcome Trust Arts Award project entitled “Portraits: Patients and Psychiatrists”. ([gemmaanderson.wordpress.com](http://gemmaanderson.wordpress.com)) Andersons work is held in the collection of the Arts Council of Northern Ireland, The Wellcome Trust, University College Falmouth and the Braid Museum. For more information [www.gemma-anderson.co.uk](http://www.gemma-anderson.co.uk).

### Acme Studios

Founded by Jonathan Harvey and David Panton in 1972, Acme Studios is a London-based charity that provides artists with affordable studios and living space, residencies and awards. Our expanding Residency, Awards & Community Programme will support over 30 artists this year through the provision of rent-free studios, bursaries, mentoring and professional support. Many of the artists on residency programmes provide public benefit through their engagement with local communities.

Acme manages over 400 studios in 12 buildings across London. Acme has pioneered new models of mixed-use developments with commercial house builders and social housing providers including:

- 50 studios at the Galleria, Peckham, SE15 with Barratt Homes.
- 21 studios at Leven Road, Poplar, E14 with Swan Housing Group.
- 12 studios at Harrow Road, NW10 with Catalyst Housing Group
- 27 studios at Stratford High Street, E15 with Genesis Housing Group (opens 2012).
- 49 studios at Lesney Toys Factory, Homerton, E9 with Telford Homes (opens 2012).

For further information, please contact Jack Fortescue, Communications Officer at:

Acme Studios, 44 Copperfield Road, London E3 4RR  
**T** 020 8981 6811 **F** 020 8983 0567 **E** [jack@acme.org.uk](mailto:jack@acme.org.uk)



Supported by  
**ARTS COUNCIL  
ENGLAND**

